



1SX48-T



Actual product appearance may vary.

SX Series Subminiature Basic Switch, Single Pole Double Throw (SPDT), 250 Vac, 7 A, Pin Plunger Actuator, Solder Termination

Features

- Long operating life
- Elongated mounting hole for easier, more accurate mounting
- Choice of actuation (plunger, as well as a variety of integral and auxiliary actuators)
- Choice of electrical termination (solder, quick connect, PCB)
- Choice of operating characteristics
- Optional series constructions available (gold contacts for low energy switching, bifurcated gold contacts for maximum reliability, power load switching capability to 7 A)
- MIL-PFR-8805 qualified listings available

Potential Applications

- Aerospace
- Appliances
- Vending machines
- Timing devices
- Office equipment
- Computer/business equipment
- Test instruments
- Medical/dental equipment
- Communications equipment
- HVAC equipment
- Manually operated devices
- Valves

Description

MICRO SWITCH™ SX Series subminiature basic switches are used for simple or precision on/off application needs. They are small, precision snap-action switches that are ideal where savings in space and weight are important.

Product Specifications	
Switch Type	Subminiature 10,2 mm H x 5,08 mm W x 12,7 mm L [0.4 in H x 0.20 in W x 0.5 in L]
Sealed	No
Ampere Rating	7 A
Circuitry	Single Pole Double Throw (SPDT)
Actuator	Pin Plunger
Termination	Solder
Operating Temperature Range	-53 °C to 121 °C [-65 °F to 250 °F]
Voltage	250 Vac
Approvals	CSA, UL
Contact Type	Silver
Operating Force (O.F.)	1,39 N [5.0 oz] max.

Release Force (R.F.)	0,28 N [1.0 oz] min.
Pretravel (P.T.)	0,5 mm [0.020 in] max.
Overtravel (O.T.)	0,25 mm [0.010 in] min.
Differential Travel (D.T.)	0,13 mm [0.005 in] max.
Operating Position (O.P.)	8,13 mm \pm 0,38 mm [0.320 in \pm 0.015 in]
Housing Material	General Purpose Phenolic
High Temperature	121 °C [250 °F]
CE mark	61058-1
UL File #	E12252
CSA File #	LR41372
Agency Approvals and Standards	1054
Mounting Screw Size	22,1 mm [0.087 in]
Mounting Centers	4,83 mm [0.19 in]
Maximum Tightening Torque	0,22 N m [2.0 in lb]
Weight	1,36 g [0.003 lb]
Package Height	8,89 mm [0.35 in]
Package Width	5,0 mm [0.20 in]
Package Length	12,7 mm [0.50 in]
Recommended For	Most applications
Comment	Turret type solder terminals.
Availability	Global
UNSPSC Code	30211905
UNSPSC Commodity	30211905 Snap switches
Series Name	SX



MICRO SWITCH

FREEPORT, ILLINOIS, U.S.A.
A DIVISION OF HONEYWELL

FED. MFG. CODE 91929

SWITCH-BASIC

CATALOG LISTING

ISX48-T

PRODUCT CODE

VDA4300

CATALOG LISTING
ISX48-T
PAGE 1 OF 1
RELEASE NO. SR-12825
REPLACES

M
DRAWING NUMBER

ISSUE 7

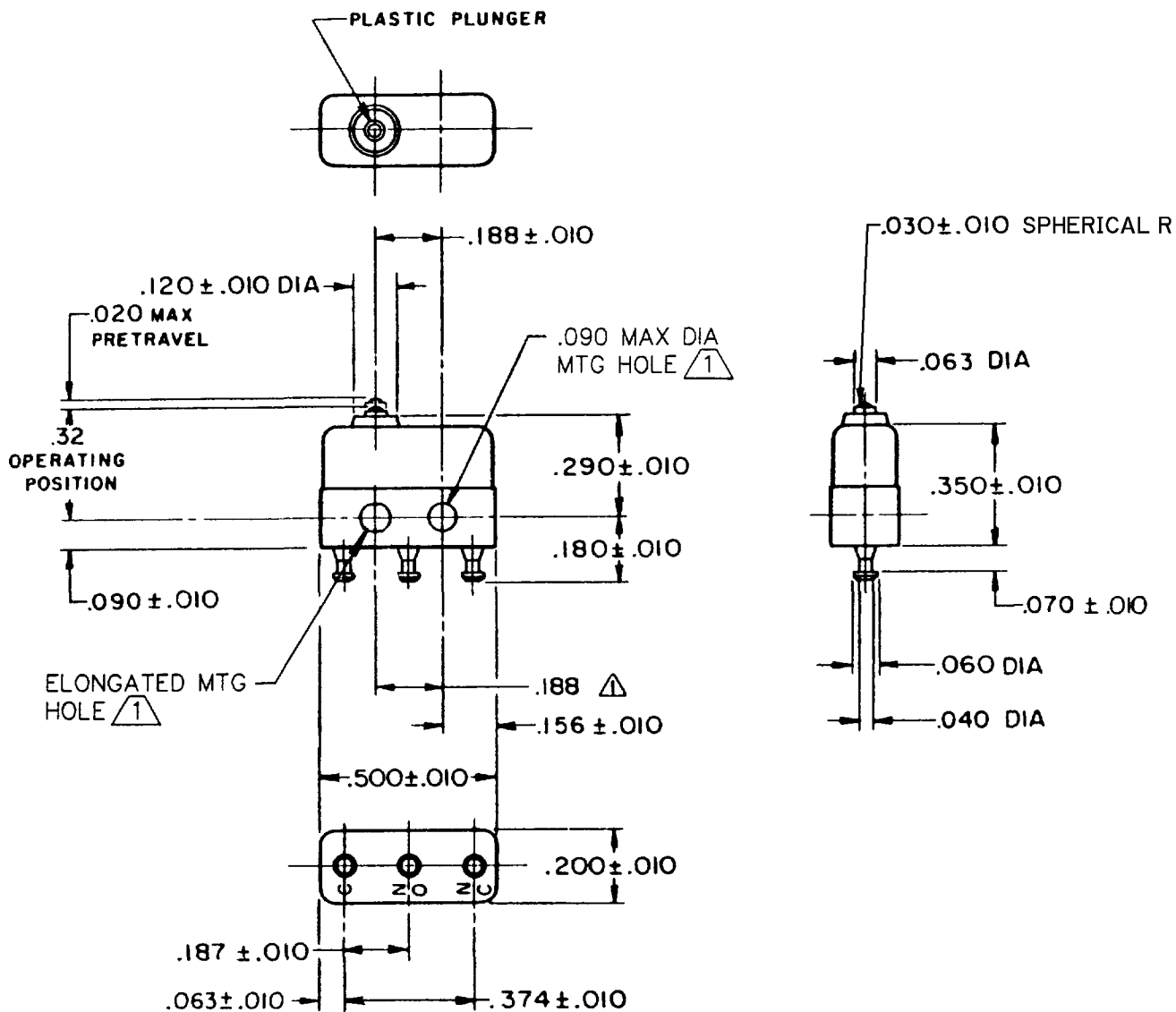
REVISIONS

A	SR 12825	W E G	28 APR 67
B	C035985	H E R	8 OCT 75
C	C071574	J A L	4 JUN 92
D	CO-82804-B	DLT	8 JAN 97
E	201033	CSL	14 AUG 00
F	0012045	KSR	04 APR 05

04 APR 05
04 APR 07
19 APR 07
14 APR 67

AK
LS D
MB F

FO-50378
DRAWN



- NOTE -**
- $\triangle 1$ MOUNTING HOLES WILL ACCEPT PINS OR SCREWS OF .087 MAX DIA ON .188 ± .002 CENTERS
 - TERMINALS ARE PLATED FOR SOLDERING
 - SWITCH WILL WITHSTAND TEMPERATURE OF 250°F
 - SWITCH HAS A GREATER OVERTRAVEL THAN STANDARD CONSTRUCTION
ADDITIONAL OVERTRAVEL WILL TEND TO REDUCE MECHANICAL LIFE

THIS DRAWING COVERS A PROPRIETARY ITEM AND IS THE PROPERTY OF MICRO SWITCH, A DIVISION OF HONEYWELL. THIS DRAWING IS NOT TO BE COPIED OR USED WITHOUT THE APPROVAL OF MICRO SWITCH.

CHARACTERISTICS		ELECTRICAL DATA		SCALE 2 TO 1
OPERATING FORCE	5 OZ MAX	CONTACT ARRANGEMENT SPDT		DO NOT SCALE PRINT
RELEASE FORCE	1 OZ MIN	28 VOLTS DC RATING		UNLESS OTHERWISE NOTED DIMENSIONS ARE IN INCHES TOLERANCES ARE:
DIFFERENTIAL TRAVEL	.005 MAX	INDUCTIVE --- SEA LEVEL --- 4 AMP 50,000 FT --- 2.5 AMP		
OVERTRAVEL	.010 MIN	RESISTIVE --- SEA LEVEL --- 7 AMP 50,000 FT --- 7 AMP		ONE PLACE (.0) ± .030
		MAXIMUM INRUSH --- 24 AMP		TWO PLACE (.00) ± .015
APPROVALS	KEMA, CE	7A 250V ~ T125 5E4		THREE PLACE (.000) ± .005
	UL, CSA	7A 250 VAC		ANGLES ± .005
			BRAND L7	WEIGHT .003 LB MAX